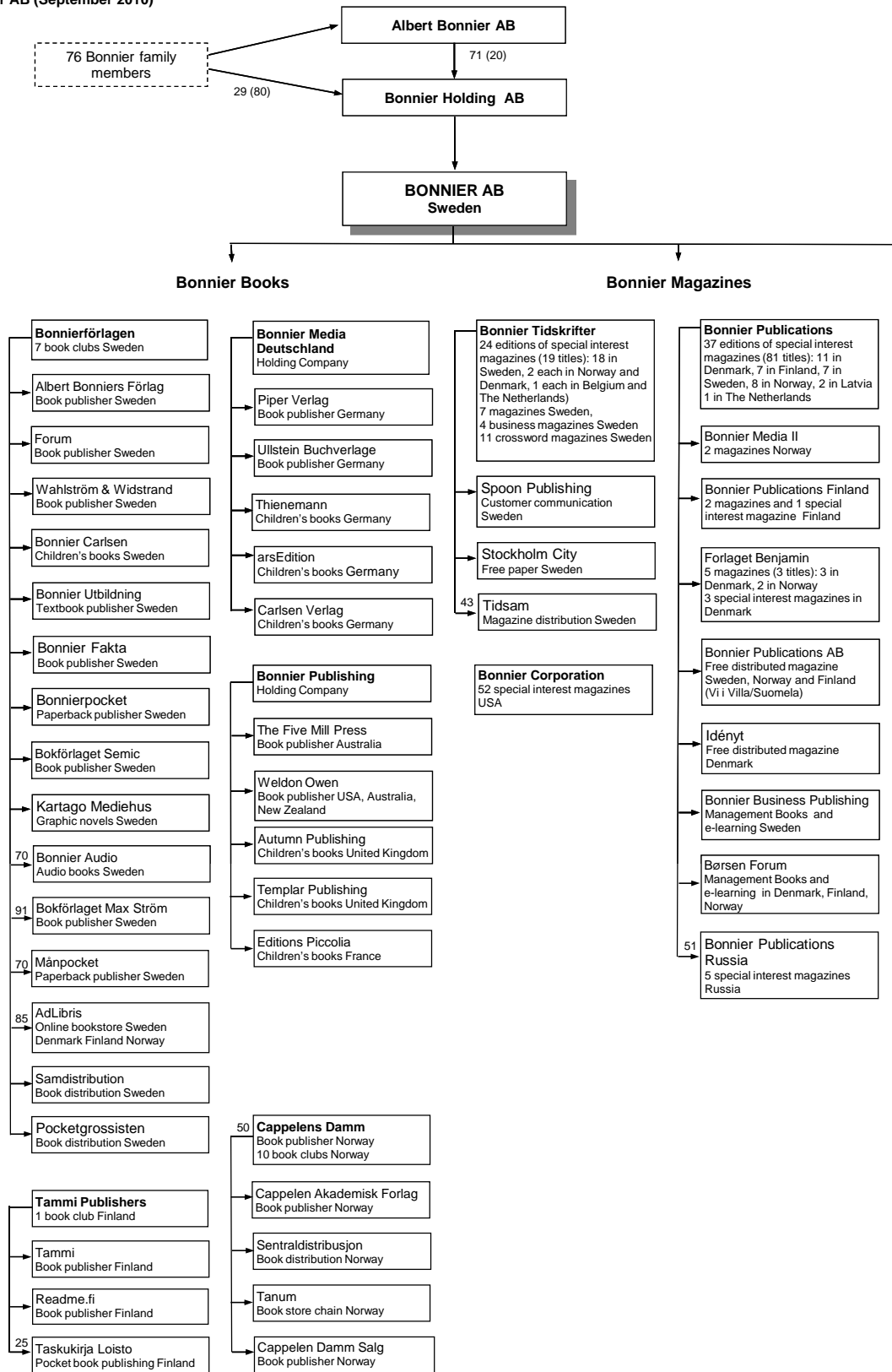
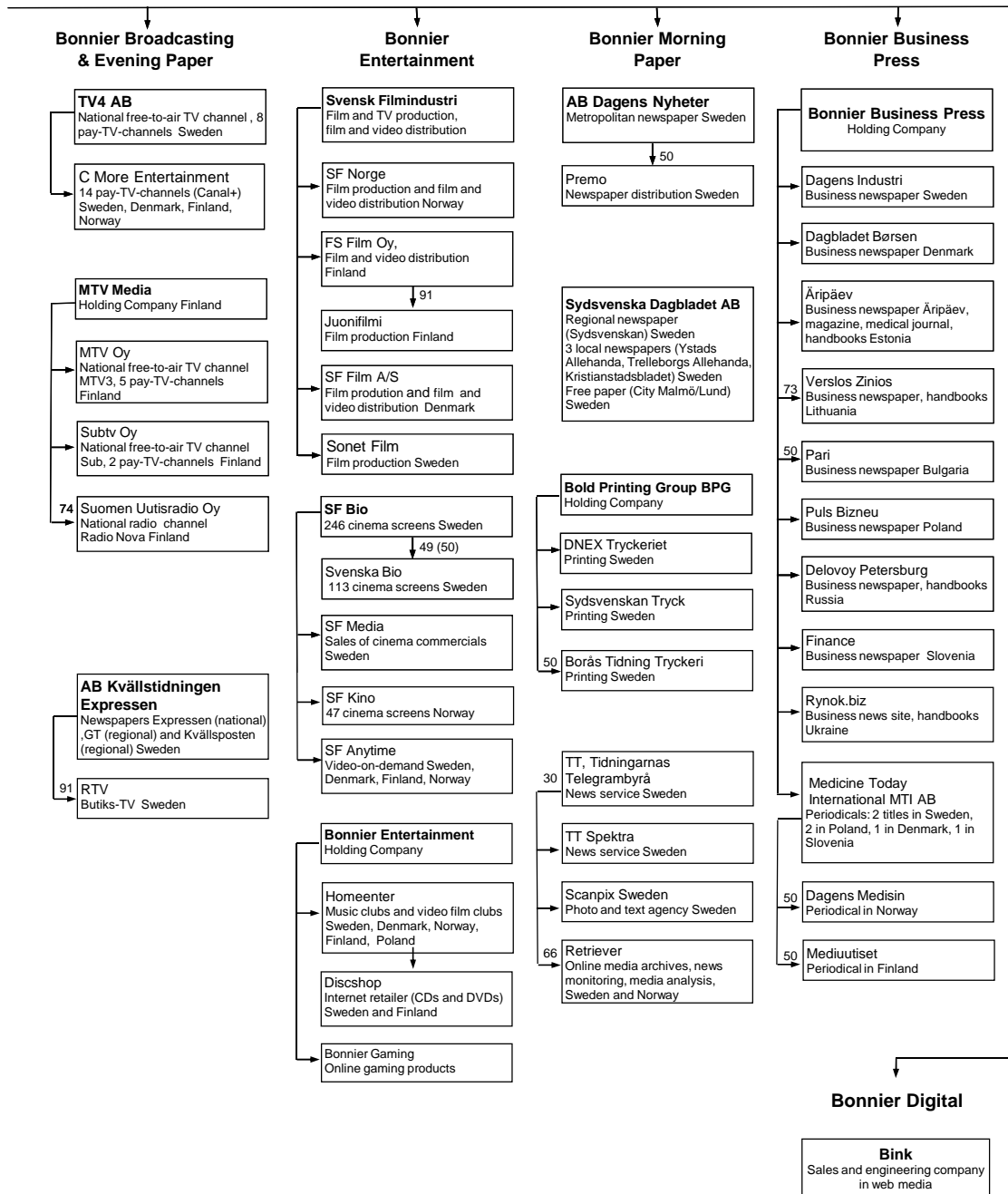


Bonnier AB (September 2010)





Note: The figures indicate voting power expressed in percentage shares; figures in parantheses indicate share of capital. Unless otherwise indicated, the company is wholly owned (100%). Where no country is specified, the company is located in the same country as the parent company.
Sources: Company annual reports, press releases and other company data.

[Latest update: September 2010]

© NORDICOM